

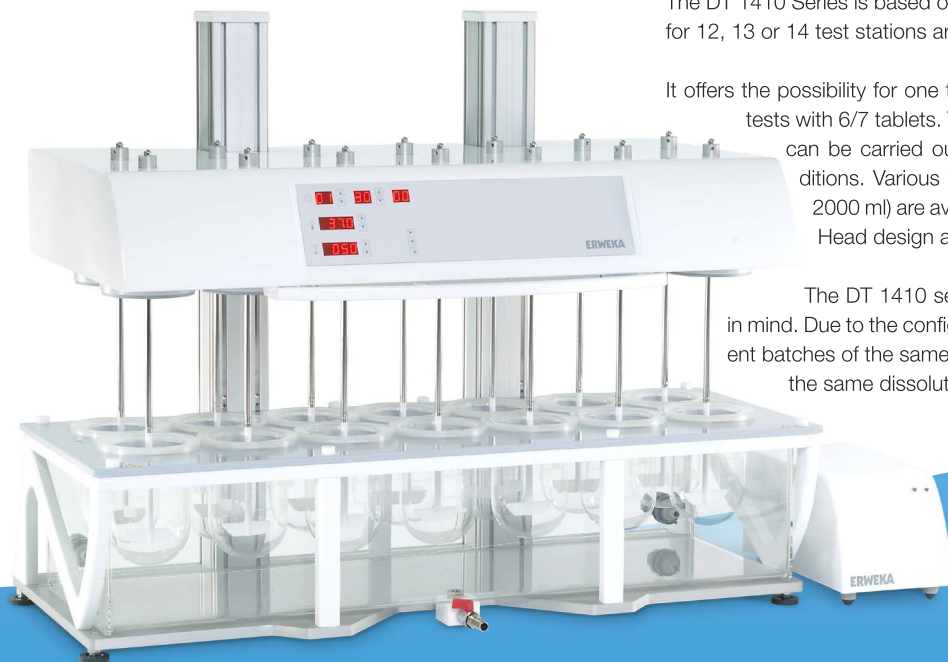
Dissolution Tester DT 1410 Series

Dissolution Tester USP Apparatus 1, 2, 5 and 6

The DT 1410 Series is based on the DT 720 and can be configured for 12, 13 or 14 test stations arranged in 2 rows.

It offers the possibility for one test with 12 / 13 / 14 tablets or two tests with 6/7 tablets. The advantage is that two USP tests can be carried out with one bath at equal test conditions. Various vessel capacities (400 ml, 1000 ml, 2000 ml) are available as well as High-Head or Low-Head design are available.

The DT 1410 series are made with high throughput in mind. Due to the configuration the unit offers to run 2 different batches of the same product or 2 different products with the same dissolution parameters at the same time.



DT 1410 Series Highlights:

- Dissolution tester with 12,13 or 14 test stations
- 3 different locking positions for High-Head, Low-Head and cleaning position of test head
- Low-Head mode for quick and convenient closing of the vessel
- High-Head mode for maximum access to each vessel
- Optimized cover design for lowest evaporation
- Easy and fast lifting of the drive head by manual lifter with gas strut support
- 3 different locking positions for High-Head, Low-Head and cleaning position of test head
- Drop magazines operated manually allows simultaneous or staggered drop of the tablets
- Easy to clean water bath with outlet valve
- Easy programming using symbol keypad
- External, independent flow-through heater
- Calibration routine for temperature sensor and heater
- Optimal access to vessels and bath for easy cleaning

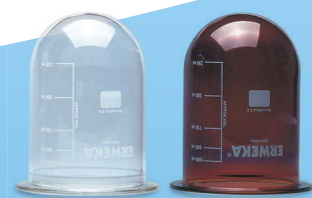


Easy to clean acrylic water bath with outlet valve



Low-Head, High-Head and cleaning positions possible

DT 1410 Series



Specifications

Dissolution tester for USP methods 1 (basket), 2 (paddle), 5 (paddle-over-disk) and 6 (rotating cylinder) with 12, 13 or 14 test stations (DT 1412, DT 1413, DT 1414)

100% USP/EP/JP compliant

Fulfills all specifications in accordance with FDA "Mechanical Calibration"

LE display for each test parameter with up/down buttons

Evaporation less than 1% (50 rpm / 1000 ml / 37 °C / 24 h)

Lifter column with gas strut support for effortless lifting and lowering of the drive head

Automatic vessel centring via centring rings

External, independent high-power heater, heating range: 30 - 50 °C, even distribution of temperature

Wobble less than 0.5 mm (paddles)

Standard manual tablet drop magazine for max. 14 samples

Height adjustment stand for quick levelling

RS 232 interface for PC connection, USB-B interface for firmware updates

Options

- + External PT 100 temperature sensor for water bath or media temperature display
- + Automatic tablet drop magazine with temperature check (according USP) before drop
- + USB-A printer interface for documentation of test run parameters (time, date, rpm, temperatures etc.)
- + Low evaporation vessel cover for High-Head operation
- + Vessels 1000 ml, 2000 ml, glass or amber glass (UV protected), 400 ml glass vessels
- + Paddles, baskets, discs for paddle-over-disk, rotating cylinders, enhancer cell, intrinsic dissolution, felodipine baskets, suppository baskets, extraction cell, USP "japanese sinker"
- + Dissolution qualification tool kit for mechanical calibration according FDA
- + Upgrade to work as online dissolution system
- + USP compliant automated sampling station with automatic height adjustment according method and volume
- + USB printer interface
- + IQ/OQ/PV documents, IQ/OQ/PV service
- + Maintenance service